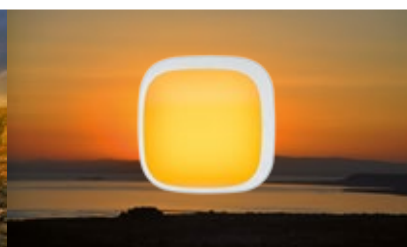
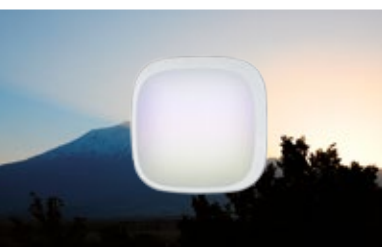
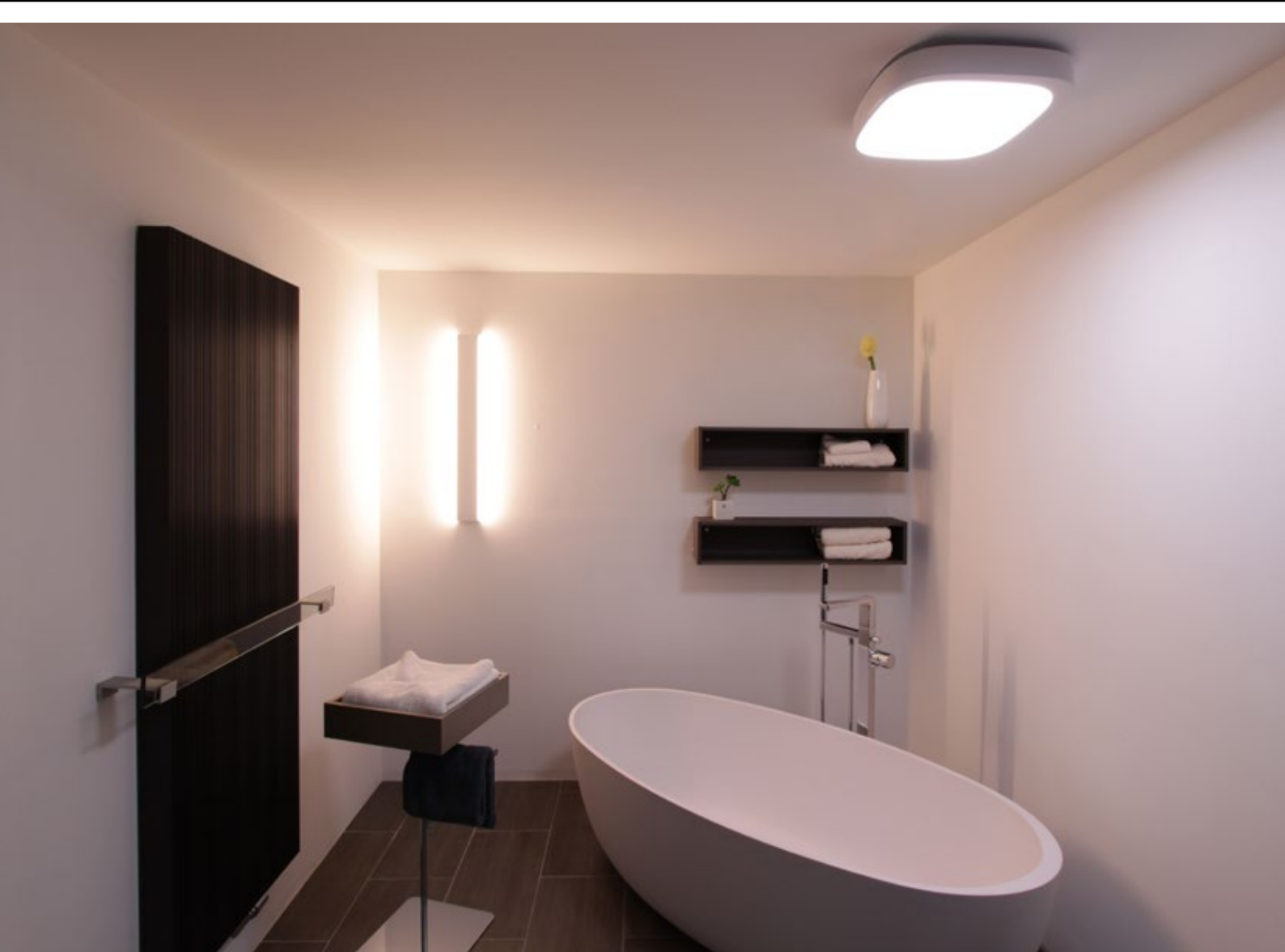


SOVT CAMPUS

THE FEEL GOOD LIGHT

- Aesthetically pleasing designer housing with integrated wall wash (flood) optics
- Ideal indoor use as wide area lighting
- Functionality: Colour temperature 1,800 K to 16,000 K
- High colour stability from micro-controller controlled LED management with temperature compensation and factory calibration
- Soft light mixing and uniform light distribution
- Microprocessor controlled light and temperature management
- Direct 230 VAC connection
- Mounting: Ceiling- or wall mounted



Environment
friendly



Low
consumption



Long
service life



Tunable
White



Brightness
dimmable



RGB
adjustable

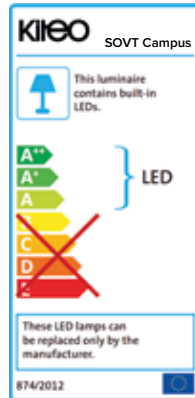


Excellent
CRI

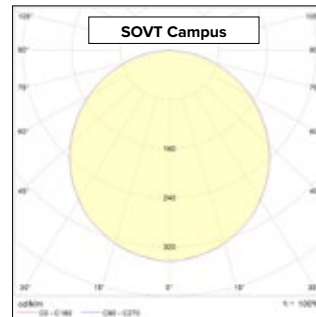
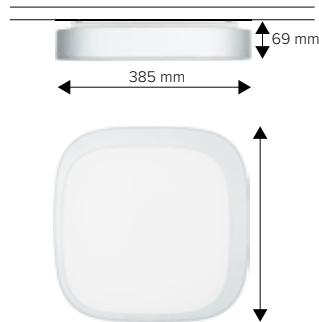
TECHNICAL DATA

SOVT CAMPUS Surface-mounted luminaire

Luminous source	LED module PI-LED
Connected load	35 W
Luminous flux	1,960 lm
Colour temperature	1,800 K–16,000 K
CRI	90
Protection category	IP 20
Dimming range	CCT/CIE-xy 5–100% RGB 0–100%
Service lifetime	L80/B10 50,000h
Tests / approvals	CE / RoHs conformity
Weight	2.1 kg
Operating voltage	230 VAC
Control mode	NeoLink/ZigBee
Protection class	II
Mounting	Surface-mounted



Dimensions



ORDER DATA

Art. No.	Luminaire
SO-CA351-II	Sovt Campus surface mounted luminaire / PI-LED / NeoLink / White (RAL 9003)
SO-CA355-II	Sovt Campus surface mounted luminaire / PI-LED / NeoLink / Silver (RAL 9006)
Art. No.	Package with radio control dial
SO-CA351-II-S	1x Sovt Campus / NeoLink / White (RAL 9003) / with control and accessories
SO-CA355-II-S	1x Sovt Campus / NeoLink / Silver (RAL 9006) / with control and accessories

CCT [K]	VISUAL DATA	MELANOPIC ACTION FACTOR
	luminous flux [lm]	alpha [smel]
1,800	1225	0.237
2,000	1400	0.274
2,500	1900	0.360
2,700	2050	0.392
3,000	1960	0.438
3,500	1865	0.509
4,000	1800	0.573
4,500	1750	0.630
5,000	1720	0.681
5,500	1695	0.726
6,000	1675	0.767
6,500	1670	0.804
7,000	1645	0.836
8,000	1630	0.890
9,000	1615	0.934
10,000	1605	0.970
12,000	1580	1.024
14,000	1560	1.063
16,000	1555	1.091

* Required control on page 54 ff.

Notes

All luminaire specifications are subject to a tolerance of +/- 15%; all electrical data is subject to a tolerance of +/- 15%. Unless otherwise specified, the values are based on 3,000 K and an ambient temperature of 25°C. Permissible operating temperature 10°C to 35°C. The manufacturer reserves the right to change any product specification without prior notice. CCT values outside the range 2,500–7,000K can be set in the CIE-xy mode. The coefficient alpha(smel) describes the melanopic effectiveness of the light source on humans and their circadian rhythm. To give the natural human biorhythm the best possible support, the melatonin production can be minimized by higher values of alpha(smel) throughout the day and stimulated by lower values in the evening. PI-LED enables the implementation of an illumination that is not only visual but also biological/melanopic effective. For a standard-conforming lighting design, KITEO recommends the document DIN SPEC 5031-100 to be taken as basis. More documents can be found at www.kiteo.eu.
Last change: 09.10.2018