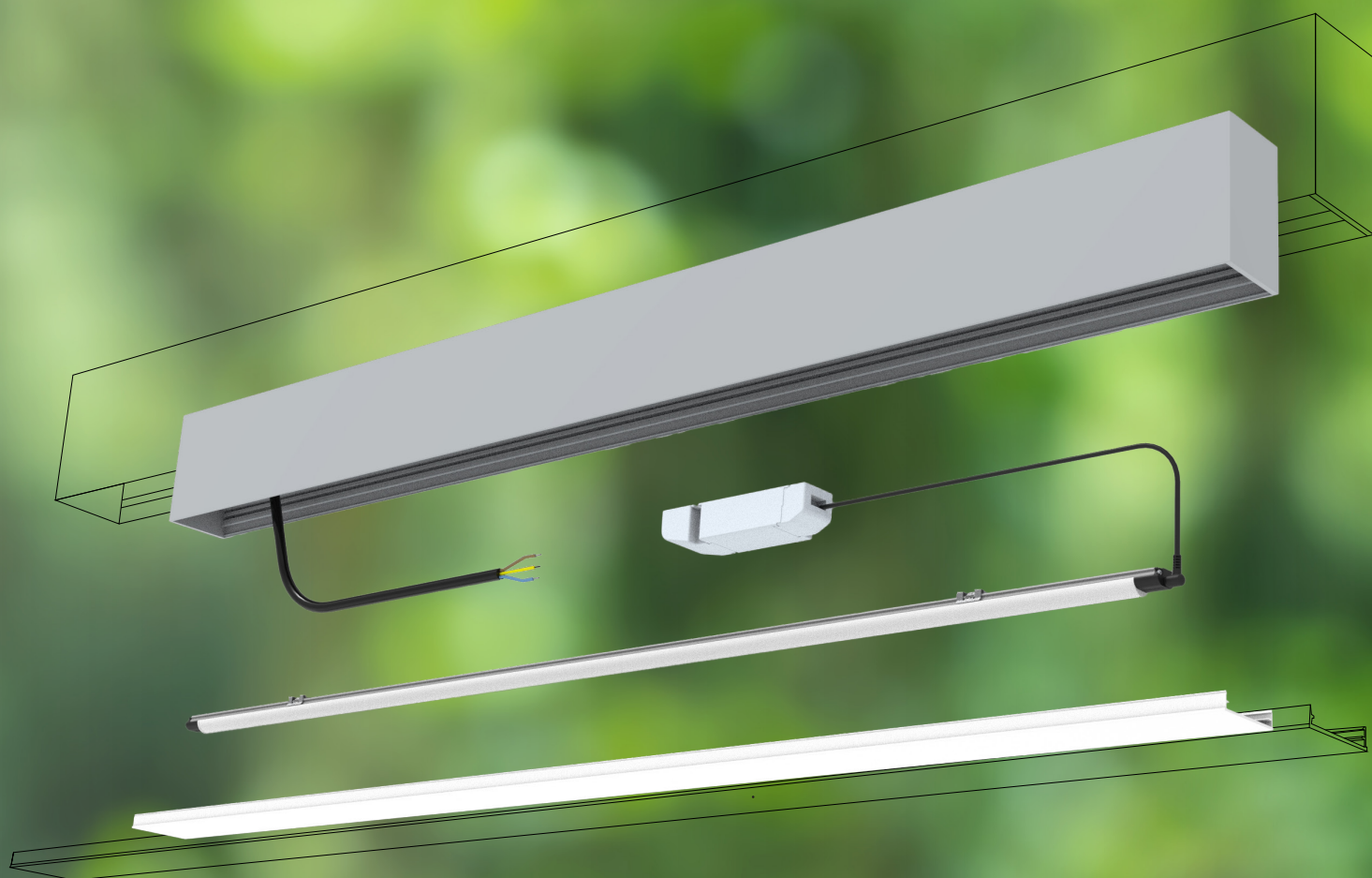
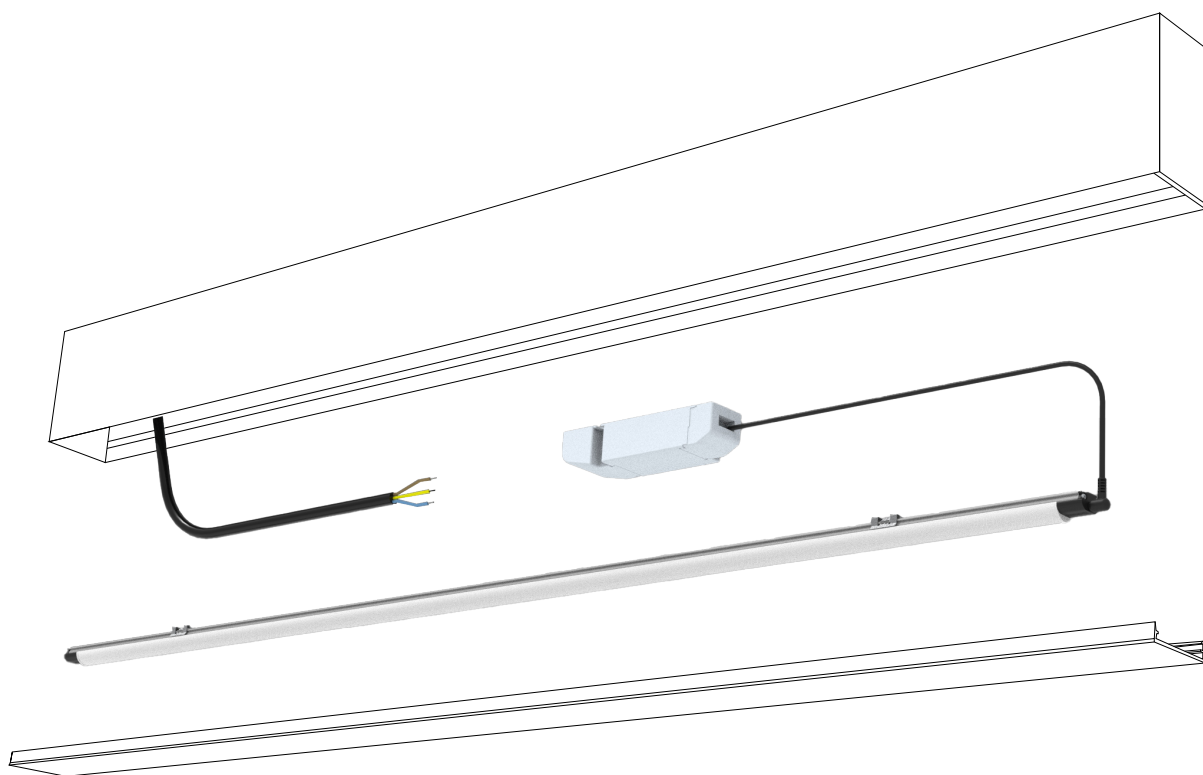


DATA SHEET - RE-FIT LINEAR PROFILE LUMINAIRES



DATASHEET - RE-FIT LINEAR PROFILE LUMINAIRES

RE-FIT SET



YOUR INNOVATIVE SOLUTION

Due to the phase-out of conventional light sources (T5, T8) at the end of August 2023, a solution was developed that enables the retrofitting and continued use of existing luminaires.

We offer Re-Fit Sets with the latest LED technology and guarantee simple and safe handling.

Your benefits at a glance:

- High efficiency lighting solution up to 180 lm/W
- Energy savings up to 70% compared to a fluorescent tube
- Energy savings up to 30% compared to an LED tube
- Directed light without further losses (symmetrical 120° beam angle)
- Ongoing use of the existing luminaire housing - no structural modifications required
- Fully certified luminaires (CE, ENEC, UL, etc.)
- Excellent light quality with CRI 92
- Flicker-free illumination
- Plug&Play solution - contains light source, operating unit, cabling and magnetic holders
- "Made in Europe" - in accordance with relevant environmental and sustainability regulations (carbon footprint)
- Eligible for funding >120 lm/W, CRI >80 and ENEC certification fulfilled
- DALI on request

DATASHEET - RE-FIT LINEAR PROFILE LUMINAIRES

TECHNICAL DATA | ORDERING INFORMATION

| Art. No. | Type | Length | Typically replaces | Luminous flux [lm]* | Power incl. driver [W] | Efficiency [lm/W] | CRI |
|--------------|--|--------|-------------------------------|---------------------|------------------------|-------------------|-----|
| 4000K | | | | | | | |
| 91450723 | LED LE516 NW 4L14-XHD2 24V/40mA COF8DY (2/2) | 516mm | - | 570 | 3.8 | 149 | 92 |
| tbd. | LED LE516 NW 4L14-XHD2 24V/50mA COF8DY (2/2) | 516mm | - | 690 | 4.5 | 154 | 92 |
| tbd. | LED LE516 NW 4L14-XHD2 24V/60mA COF8DY (2/2) | 516mm | T5 HE (ECO), 550mm, 14W (13W) | 820 | 5.6 | 146 | 92 |
| tbd. | LED LE516 NW 4L14-XHD2 24V/70mA COF8DY (2/2) | 516mm | - | 910 | 6.1 | 150 | 92 |
| 91450740 | LED LE516 NW 4L14-XHD2 24V/80mA COF8DY (2/2) | 516mm | T5 HO (ECO), 550mm, 24W (20W) | 1090 | 7.2 | 152 | 92 |
| tbd. | LED LE516 NW 4L14-XHD2 24V/100mA COF8DY (2/2) | 516mm | - | 1320 | 9.0 | 147 | 92 |
| tbd. | LED LE516 NW 4L14-XHD2 24V/120mA COF8DY (2/2) | 516mm | - | 1600 | 10.8 | 148 | 92 |
| tbd. | LED LE562 NW 4L14-XHD2 24V/40mA COF8DY (3/1) | 562mm | - | 620 | 4.2 | 149 | 92 |
| tbd. | LED LE562 NW 4L14-XHD2 24V/50mA COF8DY (3/1) | 562mm | - | 760 | 4.9 | 154 | 92 |
| tbd. | LED LE562 NW 4L14-XHD2 24V/60mA COF8DY (3/1) | 562mm | T8, 600mm, 18W | 900 | 6.2 | 146 | 92 |
| 91450701 | LED LE562 NW 4L14-XHD2 24V/70mA COF8DY (3/1) | 562mm | - | 1000 | 6.6 | 151 | 92 |
| 91450615 | LED LE562 NW 4L14-XHD2 24V/80mA COF8DY (3/1) | 562mm | - | 1190 | 7.9 | 151 | 92 |
| 91450627 | LED LE562 NW 4L14-XHD2 24V/100mA COF8DY (3/1) | 562mm | - | 1460 | 9.9 | 148 | 92 |
| 91450628 | LED LE562 NW 4L14-XHD2 24V/120mA COF8DY (3/1) | 562mm | - | 1760 | 11.9 | 148 | 92 |
| tbd. | LED LE843 NW 6L14-XHD2 24V/40mA COF8DY (5/1) | 843mm | - | 960 | 6.4 | 150 | 92 |
| tbd. | LED LE843 NW 6L14-XHD2 24V/50mA COF8DY (5/1) | 843mm | T5 HE, 850mm, 21W | 1170 | 7.6 | 153 | 92 |
| 91450663 | LED LE843 NW 6L14-XHD2 24V/60mA COF8DY (5/1) | 843mm | - | 1400 | 9.6 | 147 | 92 |
| 91450671 | LED LE843 NW 6L14-XHD2 24V/70mA COF8DY (5/1) | 843mm | - | 1550 | 10.2 | 152 | 92 |
| 91450714 | LED LE843 NW 6L14-XHD2 24V/80mA COF8DY (5/1) | 843mm | T5 HO, 850mm, 39W | 1850 | 12.1 | 152 | 92 |
| 91450674 | LED LE843 NW 6L14-XHD2 24V/100mA COF8DY (5/1) | 843mm | - | 2250 | 15.3 | 147 | 92 |
| tbd. | LED LE843 NW 6L14-XHD2 24V/120mA COF8DY (5/1) | 843mm | - | 2710 | 18.4 | 147 | 92 |
| tbd. | LED LE1030 NW 7L14-XHD2 24V/40mA COF8DY | 1030mm | - | 1190 | 7.9 | 151 | 92 |
| tbd. | LED LE1030 NW 7L14-XHD2 24V/50mA COF8DY | 1030mm | - | 1440 | 9.4 | 153 | 92 |
| tbd. | LED LE1030 NW 7L14-XHD2 24V/60mA COF8DY | 1030mm | - | 1720 | 11.8 | 146 | 92 |
| tbd. | LED LE1030 NW 7L14-XHD2 24V/70mA COF8DY | 1030mm | - | 1920 | 12.6 | 153 | 92 |
| 91450709 | LED LE1030 NW 7L14-XHD2 24V/80mA COF8DY | 1030mm | - | 2280 | 14.9 | 153 | 92 |
| 91450635 | LED LE1030 NW 7L14-XHD2 24V/100mA COF8DY | 1030mm | - | 2780 | 18.9 | 147 | 92 |
| 91450373 | LED LE1030 NW 7L14-XHD2 24V/120mA COF8DY | 1030mm | - | 3350 | 23.3 | 144 | 92 |
| tbd. | LED LE1124 NW 8L14-XHD2 24V/40mA COF8DY (7/1) | 1124mm | - | 1300 | 8.7 | 150 | 92 |
| tbd. | LED LE1124 NW 8L14-XHD2 24V/50mA COF8DY (7/1) | 1124mm | - | 1580 | 10.3 | 153 | 92 |
| tbd. | LED LE1124 NW 8L14-XHD2 24V/60mA COF8DY (7/1) | 1124mm | T5 HE, 1150mm, 28W | 1890 | 12.9 | 146 | 92 |
| 91450700 | LED LE1124 NW 8L14-XHD2 24V/70mA COF8DY (7/1) | 1124mm | - | 2100 | 13.8 | 152 | 92 |
| tbd. | LED LE1124 NW 8L14-XHD2 24V/80mA COF8DY (7/1) | 1124mm | - | 2500 | 16.4 | 152 | 92 |
| 91450724 | LED LE1124 NW 8L14-XHD2 24V/100mA COF8DY (7/1) | 1124mm | T5 HO, 1150mm, 54W | 3040 | 21.1 | 144 | 92 |
| tbd. | LED LE1124 NW 8L14-XHD2 24V/120mA COF8DY (7/1) | 1124mm | - | 3670 | 25.5 | 144 | 92 |

Packaging: 12 pieces/carton, 360 pieces./pallet

DATASHEET - RE-FIT LINEAR PROFILE LUMINAIRES

TECHNICAL DATA | ORDERING INFORMATION

| Art. No. | Type | Length | Typically replaces | Luminous flux [lm]* | Power incl. driver [W] | Efficiency [lm/W] | CRI |
|--------------|---|--------|--------------------------------|---------------------|------------------------|-------------------|-----|
| 4000K | | | | | | | |
| tbd. | LED LE1170 NW 8L14-XHD2 24V/40mA COF8DY | 1170mm | - | 1360 | 9.0 | 151 | 92 |
| tbd. | LED LE1170 NW 8L14-XHD2 24V/50mA COF8DY | 1170mm | - | 1650 | 10.8 | 153 | 92 |
| 91450619 | LED LE1170 NW 8L14-XHD2 24V/60mA COF8DY | 1170mm | T8, 1200mm, 36W | 1970 | 13.5 | 146 | 92 |
| 91450614 | LED LE1170 NW 8L14-XHD2 24V/70mA COF8DY | 1170mm | - | 2190 | 14.4 | 152 | 92 |
| 91450444 | LED LE1170 NW 8L14-XHD2 24V/80mA COF8DY | 1170mm | - | 2600 | 17.1 | 152 | 92 |
| 91450526 | LED LE1170 NW 8L14-XHD2 24V/100mA COF8DY | 1170mm | - | 3180 | 22.1 | 144 | 92 |
| 91450418 | LED LE1170 NW 8L14-XHD2 24V/120mA COF8DY | 1170mm | - | 3830 | 26.7 | 144 | 92 |
| tbd. | LED LE1450 NW 10L14-XHD2 24V/40mA COF8DY | 1450mm | - | 1700 | 11.2 | 151 | 92 |
| tbd. | LED LE1450 NW 10L14-XHD2 24V/50mA COF8DY | 1450mm | T5 HE (ECO), 1450mm, 35W (32W) | 2060 | 13.5 | 153 | 92 |
| tbd. | LED LE1450 NW 10L14-XHD2 24V/60mA COF8DY | 1450mm | - | 2460 | 16.9 | 146 | 92 |
| 91450622 | LED LE1450 NW 10L14-XHD2 24V/70mA COF8DY | 1450mm | T5 HO (ECO), 1450mm, 49W (45W) | 2740 | 18.0 | 152 | 92 |
| 91450423 | LED LE1450 NW 10L14-XHD2 24V/80mA COF8DY | 1450mm | T8, 1500mm, 58W | 3260 | 21.8 | 149 | 92 |
| 91450297 | LED LE1450 NW 10L14-XHD2 24V/100mA COF8DY | 1450mm | T5 HO (ECO), 1450mm, 80W (73W) | 3970 | 27.6 | 144 | 92 |

Packaging: 12 pieces/carton, 360 pieces./pallet

- *Measurement with laboratory power supply
- All typical values for $T_a=25^{\circ}\text{C} \pm 2^{\circ}\text{C}$
- Luminous flux min. value = typ. value - 20%
- Tolerance mechanical dimensions +/- 1mm
- Tolerance electrical data +/- 15%
- Tolerance optical data +/- 15%
- Tolerance min. value CRI +1/-1
- Energy efficiency class (valid for light source): up to 80mA=C, from 100mA=D

TECHNICAL DATA | ORDERING INFORMATION

| Art. No. | Type | Length | Typically replaces | Luminous flux [lm]* | Power incl. driver [W] | Efficiency [lm/W] | CRI |
|--------------|---|--------|-------------------------------|---------------------|------------------------|-------------------|-----|
| 3000K | | | | | | | |
| tbd. | LED LE516 WW 4L14-XHD2 24V/40mA COF8DY (2/2) | 516mm | - | 550 | 3.8 | 144 | 92 |
| tbd. | LED LE516 WW 4L14-XHD2 24V/50mA COF8DY (2/2) | 516mm | - | 670 | 4.5 | 149 | 92 |
| tbd. | LED LE516 WW 4L14-XHD2 24V/60mA COF8DY (2/2) | 516mm | T5 HE (ECO), 550mm, 14W (13W) | 790 | 5.6 | 141 | 92 |
| tbd. | LED LE516 WW 4L14-XHD2 24V/70mA COF8DY (2/2) | 516mm | - | 890 | 6.1 | 147 | 92 |
| tbd. | LED LE516 WW 4L14-XHD2 24V/80mA COF8DY (2/2) | 516mm | T5 HO (ECO), 550mm, 24W (20W) | 1050 | 7.2 | 146 | 92 |
| tbd. | LED LE516 WW 4L14-XHD2 24V/100mA COF8DY (2/2) | 516mm | - | 1280 | 9.0 | 142 | 92 |
| tbd. | LED LE516 WW 4L14-XHD2 24V/120mA COF8DY (2/2) | 516mm | - | 1550 | 10.8 | 144 | 92 |
| tbd. | LED LE562 WW 4L14-XHD2 24V/40mA COF8DY (3/1) | 562mm | - | 600 | 4.2 | 144 | 92 |
| tbd. | LED LE562 WW 4L14-XHD2 24V/50mA COF8DY (3/1) | 562mm | - | 730 | 4.9 | 148 | 92 |
| tbd. | LED LE562 WW 4L14-XHD2 24V/60mA COF8DY (3/1) | 562mm | T8, 600mm, 18W | 870 | 6.2 | 141 | 92 |
| tbd. | LED LE562 WW 4L14-XHD2 24V/70mA COF8DY (3/1) | 562mm | - | 970 | 6.6 | 146 | 92 |
| tbd. | LED LE562 WW 4L14-XHD2 24V/80mA COF8DY (3/1) | 562mm | - | 1160 | 7.9 | 147 | 92 |
| tbd. | LED LE562 WW 4L14-XHD2 24V/100mA COF8DY (3/1) | 562mm | - | 1410 | 9.9 | 143 | 92 |
| tbd. | LED LE562 WW 4L14-XHD2 24V/120mA COF8DY (3/1) | 562mm | - | 1700 | 11.9 | 143 | 92 |

Packaging: 12 pieces/carton, 360 pieces./pallet

DATASHEET - RE-FIT LINEAR PROFILE LUMINAIRES

TECHNICAL DATA | ORDERING INFORMATION

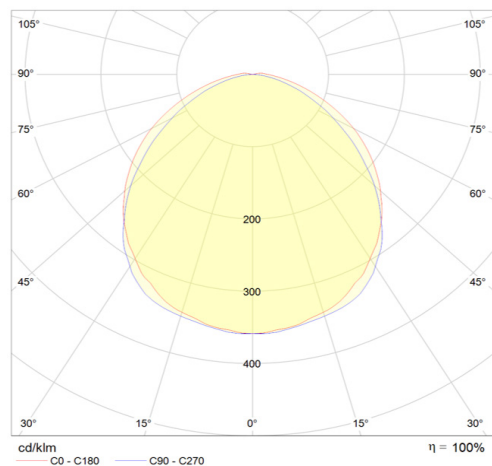
| Art. No. | Type | Length | Typically replaces | Luminous flux [lm]* | Power incl. driver [W] | Efficiency [lm/W] | CRI |
|--------------|--|--------|--------------------------------|---------------------|------------------------|-------------------|-----|
| 3000K | | | | | | | |
| tbd. | LED LE843 WW 6L14-XHD2 24V/40mA COF8DY (5/1) | 843mm | - | 930 | 6.4 | 145 | 92 |
| tbd. | LED LE843 WW 6L14-XHD2 24V/50mA COF8DY (5/1) | 843mm | T5 HE, 850mm, 21W | 1130 | 7.6 | 148 | 92 |
| tbd. | LED LE843 WW 6L14-XHD2 24V/60mA COF8DY (5/1) | 843mm | - | 1350 | 9.6 | 141 | 92 |
| 91450682 | LED LE843 WW 6L14-XHD2 24V/70mA COF8DY (5/1) | 843mm | - | 1510 | 10.2 | 148 | 92 |
| tbd. | LED LE843 WW 6L14-XHD2 24V/80mA COF8DY (5/1) | 843mm | T5 HO, 850mm, 39W | 1790 | 12.1 | 148 | 92 |
| tbd. | LED LE843 WW 6L14-XHD2 24V/100mA COF8DY (5/1) | 843mm | - | 2180 | 15.3 | 143 | 92 |
| tbd. | LED LE843 WW 6L14-XHD2 24V/120mA COF8DY (5/1) | 843mm | - | 2630 | 18.4 | 143 | 92 |
| tbd. | LED LE1030 WW 7L14-XHD2 24V/40mA COF8DY | 1030mm | - | 1150 | 7.9 | 146 | 92 |
| tbd. | LED LE1030 WW 7L14-XHD2 24V/50mA COF8DY | 1030mm | - | 1400 | 9.4 | 148 | 92 |
| tbd. | LED LE1030 WW 7L14-XHD2 24V/60mA COF8DY | 1030mm | - | 1670 | 11.8 | 142 | 92 |
| tbd. | LED LE1030 WW 7L14-XHD2 24V/70mA COF8DY | 1030mm | - | 1860 | 12.6 | 148 | 92 |
| tbd. | LED LE1030 WW 7L14-XHD2 24V/80mA COF8DY | 1030mm | - | 2210 | 14.9 | 148 | 92 |
| 91450658 | LED LE1030 WW 7L14-XHD2 24V/100mA COF8DY | 1030mm | - | 2690 | 18.9 | 143 | 92 |
| 91450647 | LED LE1030 WW 7L14-XHD2 24V/120mA COF8DY | 1030mm | - | 3250 | 23.3 | 139 | 92 |
| tbd. | LED LE1124 WW 8L14-XHD2 24V/40mA COF8DY (7/1) | 1124mm | - | 1260 | 8.7 | 146 | 92 |
| tbd. | LED LE1124 WW 8L14-XHD2 24V/50mA COF8DY (7/1) | 1124mm | - | 1530 | 10.3 | 148 | 92 |
| tbd. | LED LE1124 WW 8L14-XHD2 24V/60mA COF8DY (7/1) | 1124mm | T5 HE, 1150mm, 28W | 1830 | 12.9 | 142 | 92 |
| tbd. | LED LE1124 WW 8L14-XHD2 24V/70mA COF8DY (7/1) | 1124mm | - | 2040 | 13.8 | 148 | 92 |
| tbd. | LED LE1124 WW 8L14-XHD2 24V/80mA COF8DY (7/1) | 1124mm | - | 2420 | 16.4 | 148 | 92 |
| tbd. | LED LE1124 WW 8L14-XHD2 24V/100mA COF8DY (7/1) | 1124mm | T5 HO, 1150mm, 54W | 2950 | 21.1 | 139 | 92 |
| tbd. | LED LE1124 WW 8L14-XHD2 24V/120mA COF8DY (7/1) | 1124mm | - | 3560 | 25.5 | 140 | 92 |
| tbd. | LED LE1170 WW 8L14-XHD2 24V/40mA COF8DY | 1170mm | - | 1320 | 9.0 | 147 | 92 |
| tbd. | LED LE1170 WW 8L14-XHD2 24V/50mA COF8DY | 1170mm | - | 1600 | 10.8 | 148 | 92 |
| 91450618 | LED LE1170 WW 8L14-XHD2 24V/60mA COF8DY | 1170mm | T8, 1200mm, 36W | 1910 | 13.5 | 142 | 92 |
| tbd. | LED LE1170 WW 8L14-XHD2 24V/70mA COF8DY | 1170mm | - | 2130 | 14.4 | 148 | 92 |
| 91450529 | LED LE1170 WW 8L14-XHD2 24V/80mA COF8DY | 1170mm | - | 2530 | 17.1 | 148 | 92 |
| 91450624 | LED LE1170 WW 8L14-XHD2 24V/100mA COF8DY | 1170mm | - | 3080 | 22.1 | 140 | 92 |
| 91450620 | LED LE1170 WW 8L14-XHD2 24V/120mA COF8DY | 1170mm | - | 3720 | 26.7 | 140 | 92 |
| tbd. | LED LE1450 WW 10L14-XHD2 24V/40mA COF8DY | 1450mm | - | 1650 | 11.2 | 147 | 92 |
| tbd. | LED LE1450 WW 10L14-XHD2 24V/50mA COF8DY | 1450mm | T5 HE (ECO), 1450mm, 35W (32W) | 2000 | 13.5 | 148 | 92 |
| tbd. | LED LE1450 WW 10L14-XHD2 24V/60mA COF8DY | 1450mm | - | 2380 | 16.9 | 141 | 92 |
| 91450621 | LED LE1450 WW 10L14-XHD2 24V/70mA COF8DY | 1450mm | T5 HO (ECO), 1450mm, 49W (45W) | 2660 | 18.0 | 148 | 92 |
| 91450625 | LED LE1450 WW 10L14-XHD2 24V/80mA COF8DY | 1450mm | T8, 1500mm, 58W | 3160 | 21.8 | 145 | 92 |
| 91450623 | LED LE1450 WW 10L14-XHD2 24V/100mA COF8DY | 1450mm | T5 HO (ECO), 1450mm, 80W (73W) | 3850 | 27.6 | 140 | 92 |
| tbd. | LED LE1450 WW 10L14-XHD2 24V/120mA COF8DY | 1450mm | - | 4650 | 33.3 | 140 | 92 |

Packaging: 12 pieces/carton, 360 pieces./pallet

DATASHEET - RE-FIT LINEAR PROFILE LUMINAIRES

- *Measurement with laboratory power supply
- All typical values for $T_a=25^{\circ}\text{C} \pm 2^{\circ}\text{C}$
- Luminous flux min. value = typ. value - 20%
- Tolerance mechanical dimensions $\pm 1\text{mm}$
- Tolerance electrical data $\pm 15\%$
- Tolerance optical data $\pm 15\%$
- Tolerance min. value CRI +1/-1
- Energy efficiency class (valid for light source): up to 80mA=C, from 100mA=D

OPTICAL PROPERTIES (LUMINAIRE)



OTHER LIGHT COLORS AVAILABLE ON REQUEST:

| Code | DL | CW | WW | PC |
|-------|----------|------------|------------|----------------|
| Color | Daylight | Cool White | Warm White | Pasta & Cheese |
| CCT | 6500K | 5000K | 3000K | 2700K |

DATASHEET - RE-FIT LINEAR PROFILE LUMINAIRES

■■■ CONVERTER (ON/OFF) INCL. FEEDER CABLE



- On/Off operation
- Driver dimensions 35W: 230 x 30 x 21mm
- Driver dimensions 60W: 280 x 30 x 21mm
- Driver dimensions 100W: 360 x 30 x 21mm
- DALI on request
- Magnetic mounting set on request

■■■ ORDERING INFORMATION

| Type | Item no. |
|--|----------|
| CONVERTER (built-in) 35W incl. 1x feeder straight CINCH 530mm | 89601382 |
| CONVERTER (built-in) 60W incl. 2x feeder straight CINCH 530mm | 89601383 |
| CONVERTER (built-in) 100W incl. 2x feeder straight CINCH 530mm | 89601384 |

■■■ FEEDER CABLE (INDIVIDUAL ITEM)



- Power supply cable for connecting a linear LED luminaire with cinch to a driver
- The power supply cable is already connected to the driver

■■■ ORDERING INFORMATION

| Length | Weight | Type | Item no. |
|--------|--------|-----------------------------|----------|
| 530mm | 30g | LED Feeder angled CINCH 530 | 89601612 |

■■■ BRIDGE CABLE



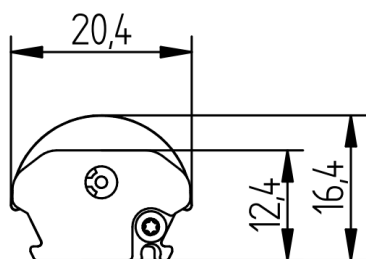
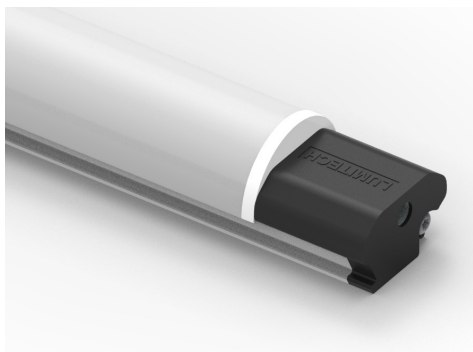
- Bridge to connect two luminaires with Cinch

■■■ ORDERING INFORMATION - Bridge

| Length | Weight | Type | Item no. |
|--------|--------|-----------------------------|----------|
| 200mm | 9g | LED Bridge angled CINCH 200 | 89601625 |

DATASHEET - RE-FIT LINEAR PROFILE LUMINAIRES

III LUMINAIRE



III LUMINAIRE DESCRIPTION

- Suitable for the retrofitting of fluorescent tubes or LED tubes
- Ready-to-connect solution available, thanks to Cinch Connection System
- High operational performance due to directional lighting & integrated heat dissipation
- Excellent product illumination thanks to the combination of SMD LEDs and innovative optics
- Safe-use operation due to safety extra-low voltage (SELV)
- Simple installation with application of magnetic fixing plates
- Heat sink profile made of extruded aluminum
- LED modules protected against moisture & dust by conformal coating
- End caps made of PBT
- Cover made of PMMA
- Dimming capability

III TECHNICAL DATA

| | |
|--|----------------|
| Supply voltage | 24VDC |
| Ambient temperature t_a | -30 ... +30 °C |
| Max. surface temperature profile t_c | 60 °C |
| Type of protection | IP54 |
| Protection class | III |
| Risk group [EN 62471:2008] | 0 |



III LIFETIME

70000h (L80 B10)

III STANDARDS

- EN 60598-1
- EN 60598-2-1
- EN 62031
- EN 62471
- EN 60335-1, EN 60335-2-24, EN 60335-2-89
- Eco Design 2019/2020 (SLR)
- Energy Labeling 2019/2015 (ELR)
- PRP/HACCP (Food Safety)
- RoHS/Reach
- ENEC, UL

III TEMPERATURE BEHAVIOR

| | | |
|---|-------|----------------|
| Operating temperature (operation, no defects) | t_a | -30 ... +30 °C |
| Storage temperature | t_s | -30 ... +60 °C |
| Temperature cooling profile ¹² | t_c | -30 ... +60 °C |

¹ Values apply to operation at 100% output, natural convection.

² If the maximum temperature limits are exceeded, the lifetime of the module will be greatly reduced or the module may be destroyed. The t_c point temperature at the profile of the light engine should be measured in the thermally stable state and under operating conditions by means of a temperature sensor or temperaturesensitive sticker in accordance with EN60598-1. The entire profile can be used as the t_c point.

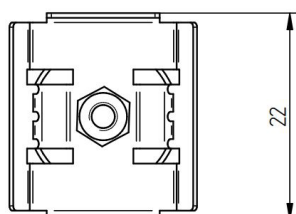
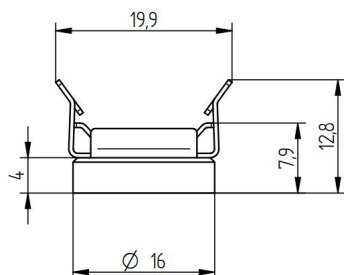
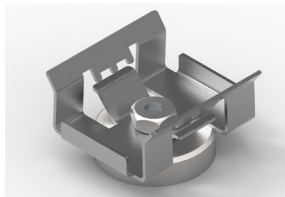


Note

- Installation should only be conducted by a licensed electrician.
- Reversing the polarity can damage the product!
- Make sure the converter has been switched off prior to connecting the light engine. If this is not observed, the light engine may be damaged!
- Connection or operation is only permitted when using the specified converters. Higher voltages result in damage to or failure of the light engine.
- The user is responsible for correct selection of illumination intensity. Excessive illumination intensity may lead to greying or colour changes of displayed products.
- Lumitech™ accessories must be used. Accessories (e.g. cables) from other manufacturers can lead to failures and damage. The use of these parts will void any warranty claim!
- Luminaires must not be installed next to a cooling or heating outlet!

DATASHEET - RE-FIT LINEAR PROFILE LUMINAIRES

■■ PLATE METAL 0° MAGNETIC



- Mounting holder with 0° angle & magnet
- Material: Metal

■■ TECHNICAL DATA

| | |
|---|--------------------|
| Ambient temperature in installed condition | -30 ... +80 °C |
| Ambient temperature during assembly of the luminaire or profile | +10 ... +30 °C |
| Dimensions L x W x H | 22 x 19.9 x 12.8mm |
| Weight | 0.009kg |

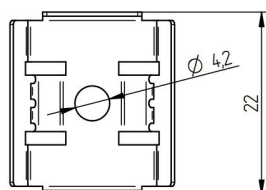
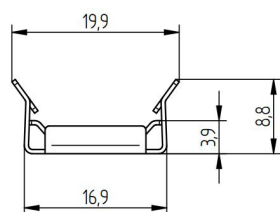
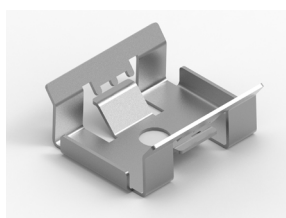
RoHS

■■ ORDERING INFORMATION

| Type | Item no. |
|------------------------------------|----------|
| LED FIXING PLATE METAL 0° Magnetic | 88167382 |

Packaging: 50 pcs./pack, 1000 pcs./box

■■ PLATE METAL 0°



- Mounting holder with 0° angle
- Material: Metal
- Assembly: By means of self-tapping sheet metal screws

■■ TECHNICAL DATA

| | |
|---|-------------------|
| Ambient temperature in installed condition | -30 ... +80 °C |
| Ambient temperature during assembly of the luminaire or profile | +10 ... +30 °C |
| Dimensions L x W x H | 22 x 19.9 x 8.8mm |
| Weight | 0.002kg |

RoHS

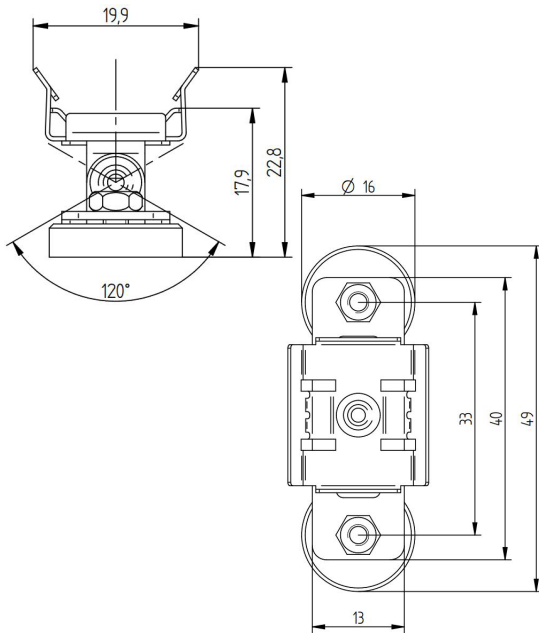
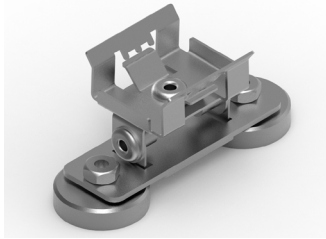
■■ ORDERING INFORMATION

| Type | Item no. |
|---------------------------|----------|
| LED FIXING PLATE METAL 0° | 88167376 |

Packaging: 50 pcs./pack, 1000 pcs./box

DATASHEET - RE-FIT LINEAR PROFILE LUMINAIRES

PLATE METAL ADJUSTABLE MAGNETIC



- Magnetic mounting plate
- Material: Metal
- Angle adjustable from -60° to $+60^\circ$

TECHNICAL DATA

| | |
|---|--------------------|
| Ambient temperature in installed condition | -30 ... +80 °C |
| Ambient temperature during assembly of the luminaire or profile | +10 ... +30 °C |
| Dimensions L x W x H | 49 x 19.9 x 22.8mm |
| Weight | 0.024kg |

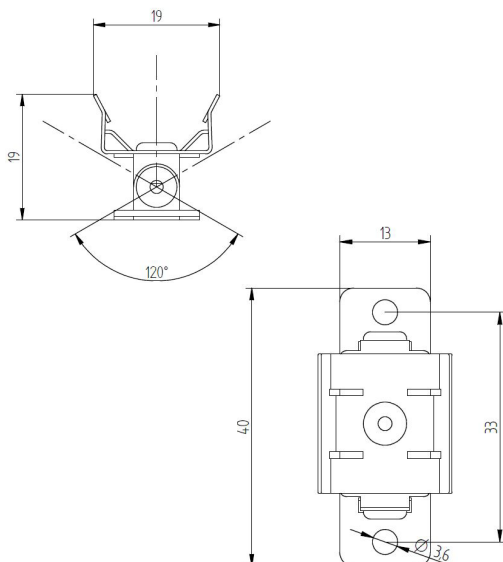
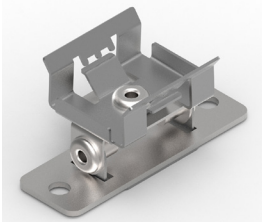
RoHS

ORDERING INFORMATION

| Type | Item no. |
|---------------------------------------|----------|
| LED MAGNETIC PLATE METAL - adjustable | 88167385 |

Packaging: 100 pcs./box

PLATE METAL ADJUSTABLE



- Mounting plate
- Material: Metal
- Angle adjustable from -60° to $+60^\circ$

TECHNICAL DATA

| | |
|---|----------------|
| Ambient temperature in installed condition | -30 ... +80 °C |
| Ambient temperature during assembly of the luminaire or profile | +10 ... +30 °C |
| Dimensions L x W x H | 40 x 19 x 19mm |
| Weight | 0.010kg |

RoHS

ORDERING INFORMATION

| Type | Item no. |
|-------------------------------------|----------|
| LED FIXING PLATE METAL - adjustable | 88167384 |

Packaging: 1000 pcs./box